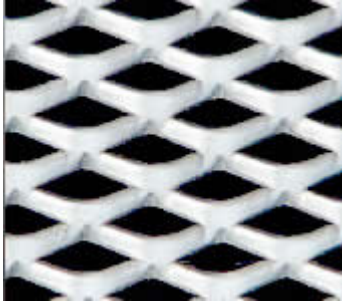


Stainless Steel Expanded Metal

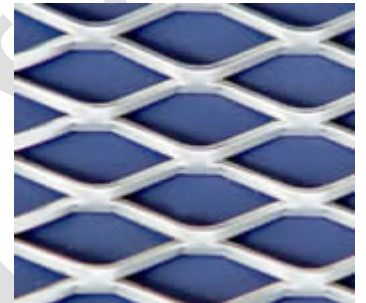
[Stainless steel expanded metal](#) is made of high quality stainless steel sheet or coil which has been expanded on the machines.



Processing:

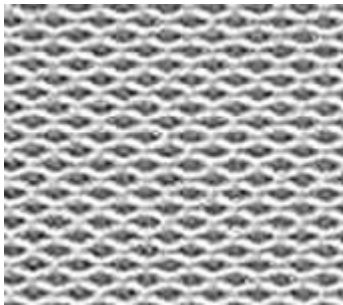
Each sheet is expanded in the regular form and then passed through a cold rolled reducing mill. In this process the length of the sheet is elongated, but the width of the sheet remains. The sheet is then sent through a leveler to maintain its flatness.

[Stainless steel expanded metal](#) is a finished product came from pressing after having been expanded.



Application:

[Stainless steel expanded metal](#) usually used as fencings for road, railway, civil building and so on. Also it can used to protect all kinds of machines, electrical equipments.



Specifications of Stainless Steel Expanded Metal:

mesh thickness(mm)	distance short (mm)	distance long(mm)	strip(mm)	width	length	weight
				(m)	(m)	(kg/m2)
0.5	2.5	4.5	0.5	0.5	1	1.8
0.5	10	25	0.5	0.6	2	0.73
0.6	10	25	1	0.6	2	1
0.8	10	25	1	0.6	2	1.25

Main Contact Info:

Add: No.68 Yuhua South Road Anping County Hebei Province China. P.C.:053600

Tel & Fax:

Tel: 86-318-7532188 7512838 7523138
Fax: 86-318-7524828

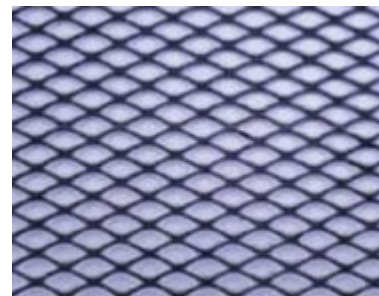
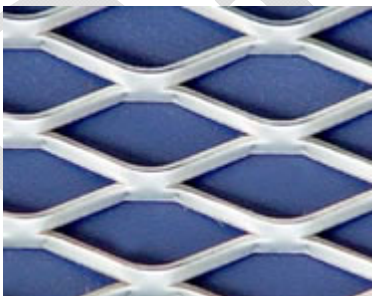
E-mail: sunlight@wire-cloth.org
<http://www.sunny-wiremesh.com>

1	10	25	1.1	0.6	2	1.77
1	15	40	1.5	2	4	1.85
1.2	10	25	1.1	2	4	2.21
1.2	15	40	1.5	2	4	2.3
1.5	15	40	1.5	1.8	4	2.77
1.5	23	60	2.6	2	3.6	2.77
2	18	50	2.1	2	4	3.69
2	22	60	2.6	2	4	3.69
3	40	80	3.8	2	4	5.00
4	50	100	4	2	2	11.15
4.5	50	100	5	2	2.7	11.15
5	50	100	5	1.4	2.6	12.39
6	50	100	6	2	2.5	17.35
8	50	100	8	2	2.1	28.26

Expanded Steel Plate Mesh

Sunshine can supply [expanded steel plate mesh](#) or expanded metal mesh in a variety of patterns and sizes.

[Expanded steel plate mesh](#) is mainly used with concrete in buildings and construction, maintenance of equipments, making of arts and crafts, covering screen for first class sound case. Also fencing for super highway, studio and highway. Heavy [expanded metal](#) can be used as step mesh of oil tanks, working platform, corridor and walking road for heavy model equipment, boiler, petroleum and mine well, automobile vehicles, big ships. Also serve as reinforcing bar in construction, railway and bridges.



Main Contact Info:

Add: No.68 Yuhua South Road Anping County Hebei Province China. P.C.:053600

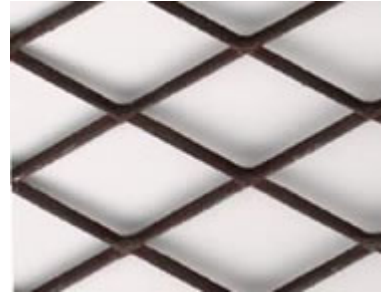
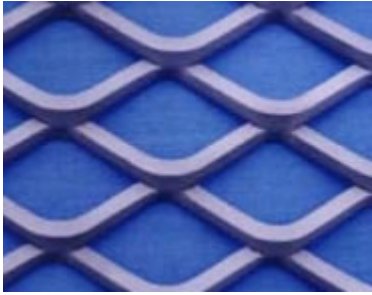
Tel & Fax:

Tel: 86-318-7532188 7512838 7523138
 Fax: 86-318-7524828

E-mail: sunlight@wire-cloth.org
<http://www.sunny-wiremesh.com>



Anping Sunshine Metal Product Factory



Sunny

Main Contact Info:

Add: No.68 Yuhua South Road Anping County Hebei Province China. P.C.:053600

Tel & Fax:

Tel: 86-318-7532188 7512838 7523138
Fax: 86-318-7524828

E-mail: sunlight@wire-cloth.org
<http://www.sunny-wiremesh.com>